



Power Innovations Int'l, Inc.

EnterprisePlus™...

...total enterprise enablement - all information and control managed through one source!



Enterprise Plus...

...total enterprise enablement - all information and control managed through one source!

Power Innovations

EnterprisePlus™

Uninterruptible Power Quality System



The EnterprisePlus™ from Power Innovations is the most complete and powerful enterprise enabling tool available. The Enterprise Plus is an intelligent power distribution unit and management tool, as well as a comprehensive environmental control device that allows flexible, complete power and environmental monitoring and management for sites of all sizes.

Technology and Innovation

The EnterprisePlus utilizes eight power control circuits to control and monitor the connected load. These circuits allow sequencing of loads during a power up or a shut down, as well as individualized remote ON/OFF capabilities. More importantly, the EnterprisePlus enables intelligent load shedding so that critical loads can be maintained and managed longer in emergency conditions or for necessary shutdown during power conservation shifts. The EnterprisePlus can also facilitate requests to reduce power use by specified percentages. If loads are changed or degraded, this device notifies the system administrator of potentially compromising conditions.

Load Monitoring

Each load is monitored by voltage, current, and power. For systems that require more than eight controlled loads, the outputs can be scaled up in increments of eight (8). The EnterprisePlus allows the monitoring and control of environmental conditions (i.e. temperature, humidity, water levels, fire, smoke, etc.) through a wide range of analog and digital sensors. Digital and analog sensor capability is also expandable.

Managing Point-to-Point Connectivity

The EnterprisePlus incorporates USB ports to allow video monitoring, as well as control and management of other USB devices. The EnterprisePlus provides flexible means to manage point-to-point connectivity by

incorporating multiple levels of communication and expandability through RS232, Ethernet, USB, and I²C compatible ports. The EnterprisePlus utilizes dual power inputs for system fault tolerances and redundancies, giving the user the option of selecting an input for maintenance and service of an important feed and/or redundancy protection in the event of an input failure.

Security

Security in the EnterprisePlus has been carefully addressed to allow programmable or remote lockout with multiple levels of IP and password protection. The 150-function display allows total monitoring and assessment of all functions. These same user friendly ergonomic displays are replicated in the remote management software screens.

Full Remote and Local Monitoring, Management, and Control Options

The EnterprisePlus can be monitored locally or remotely monitored and managed via a network, an IP address, or a dial-up connection. A comprehensive, easy-to-understand, and secure Web page provides vital information from the EnterprisePlus. The EnterprisePlus also sends SNMP TRAP, email, and mobile phone notifications.

Expandability

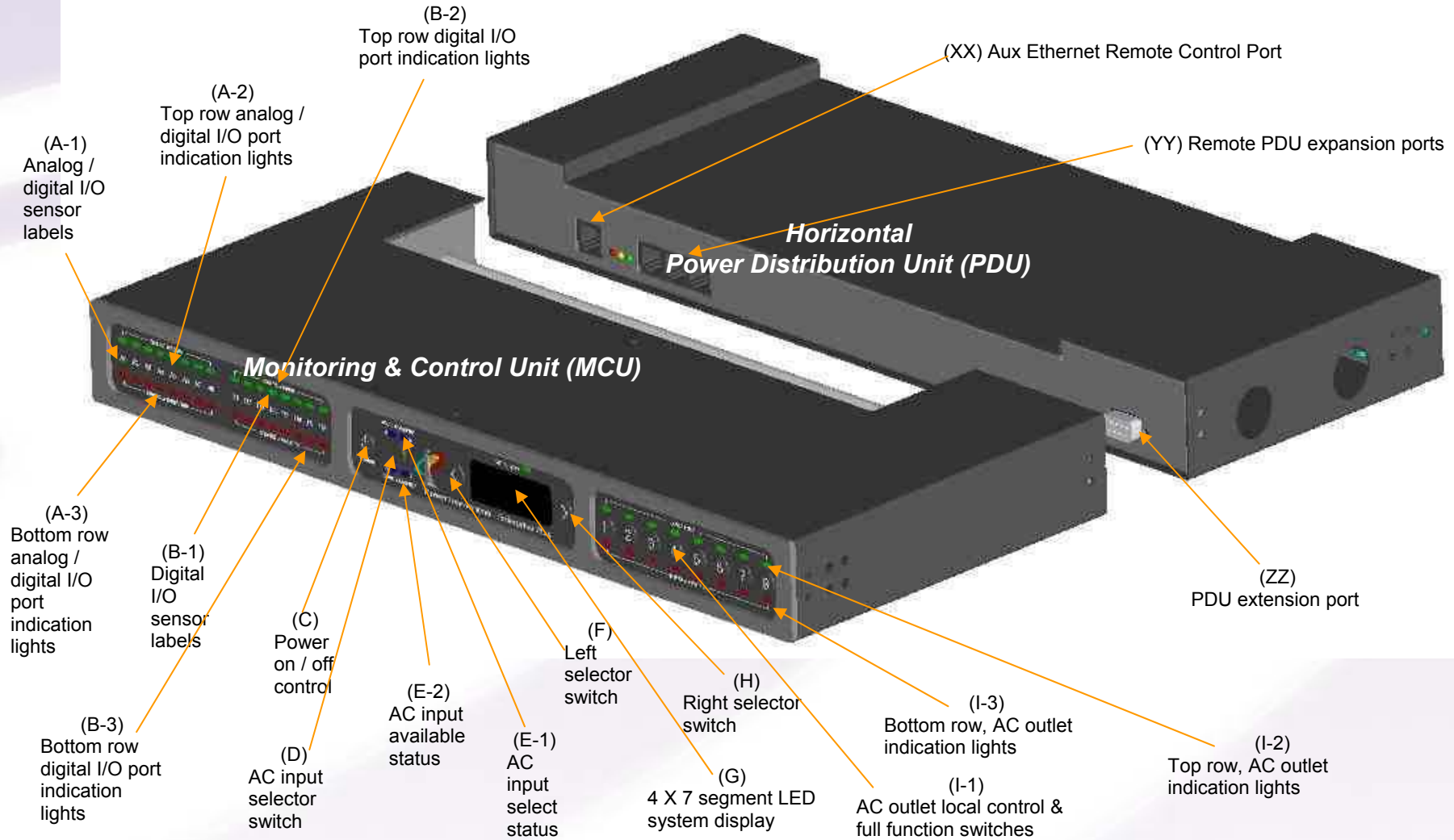
Multiple units can be linked together to accommodate more sensors, and/or outlets. Up to four (4) Monitoring and Control Units may be linked together and up to sixteen (16) PDUs may be linked to each Monitoring and Control Unit.

© 2005 Power Innovations Int'l, Inc.

Enterprise Plus...

...total enterprise enablement - all information and control managed through one source!

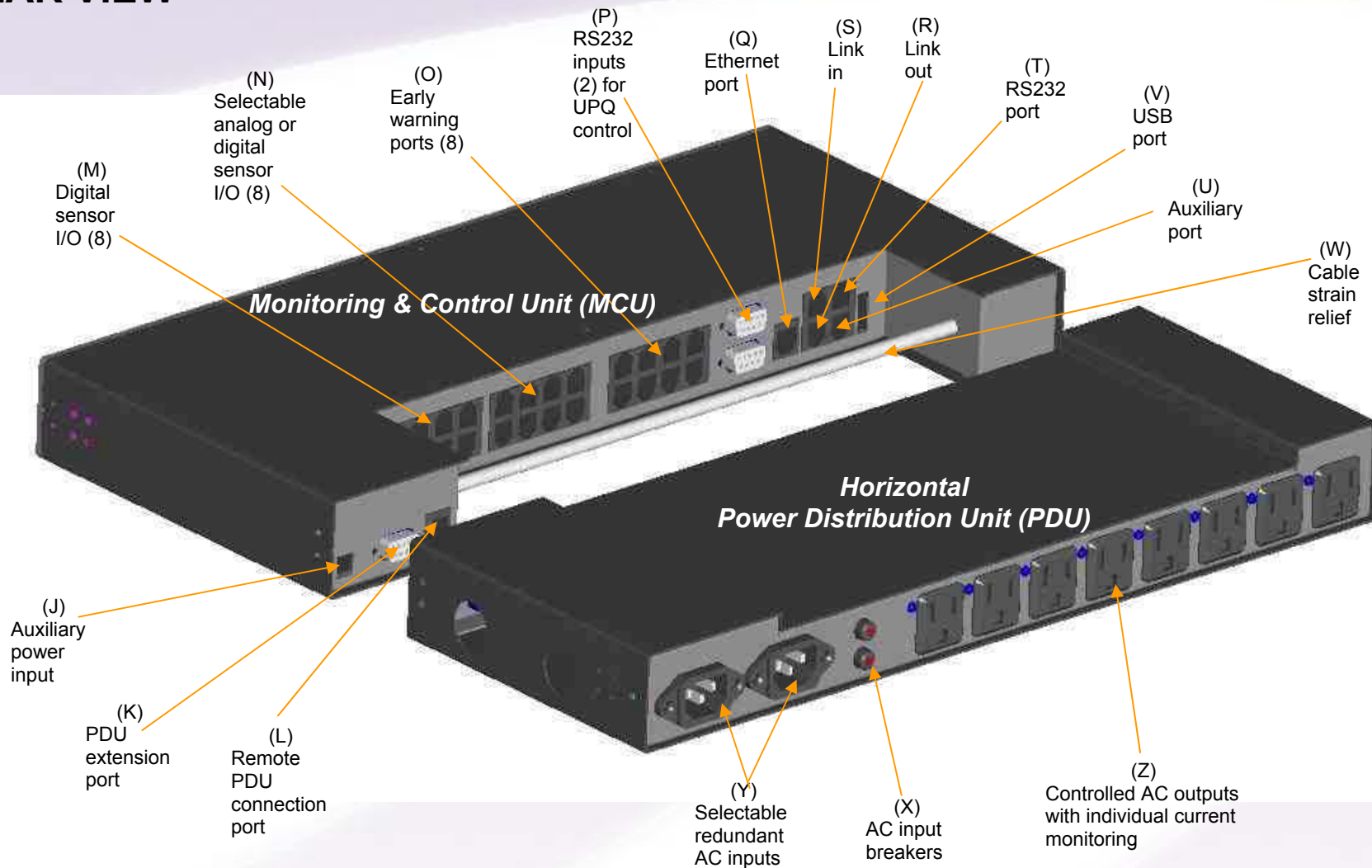
FRONT VIEW



Enterprise Plus...

...total enterprise enablement - all information and control managed through one source!

REAR VIEW

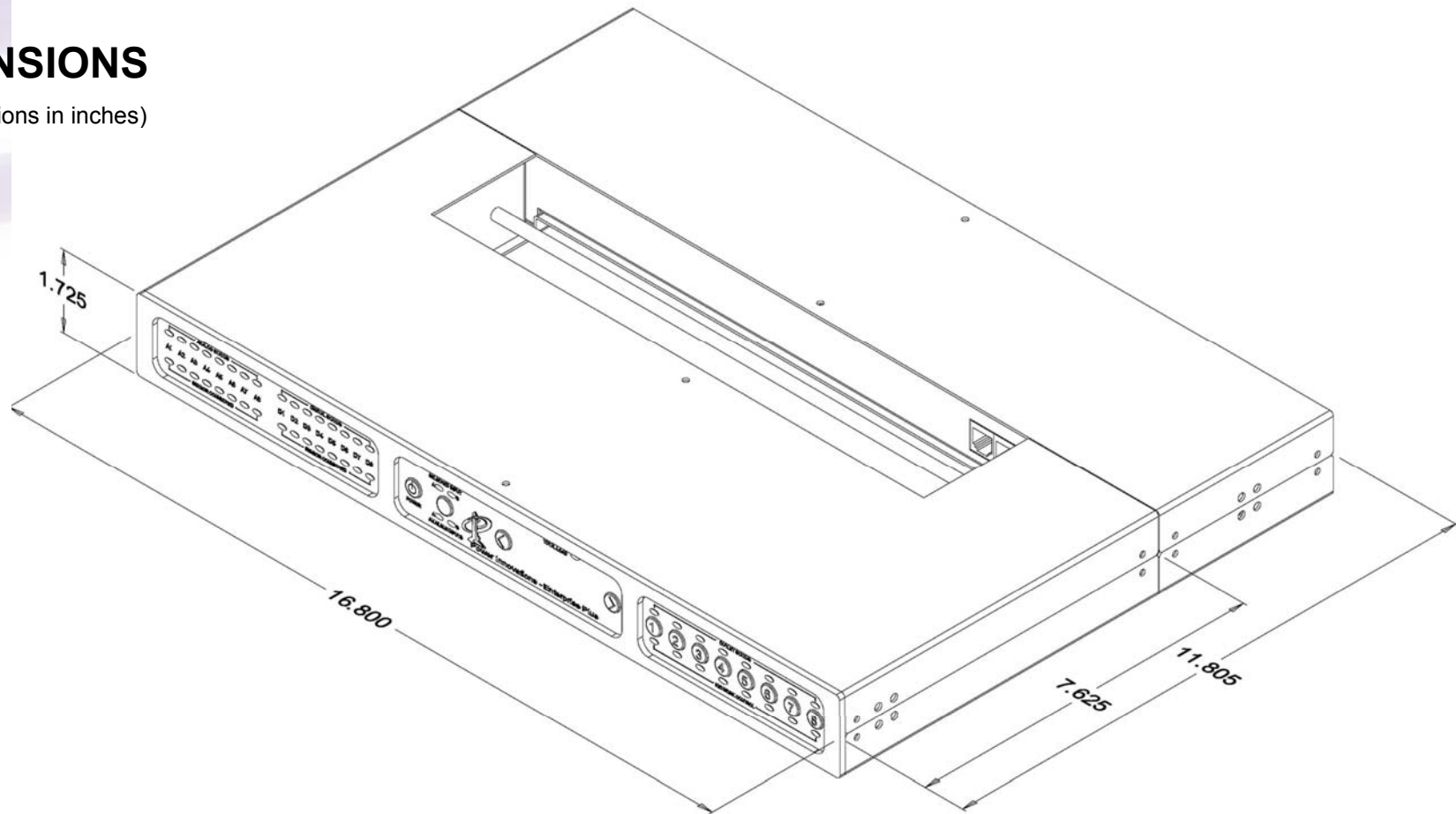


Enterprise Plus...

...total enterprise enablement - all information and control managed through one source!

DIMENSIONS

(All dimensions in inches)



Enterprise Plus...

...total enterprise enablement - all information and control managed through one source!

Product Description

<u>Part</u>	<u>Item Description and Function</u>
A-1	Eight (8) analog/digital input port alphanumeric labels corresponding to input ports (item N).
A-2	Eight (8) Input sensor status top row indication lights for item A. Red = low signal, green = signal high, yellow = port is selected for monitoring on screen (item G).
A-3	Eight (8) Input sensor status bottom row indication lights for item A. Blue (RED) = sensor status (lit when connected).
B-1	Eight (8) dedicated digital input port alphanumeric labels correspond to input ports (item M).
B-2	Eight (8) sensor status top row indication lights for item B. Red = signal low, green = signal high, yellow = port is selected for monitoring on screen (item G).
B-3	Eight (8) I/O sensor status bottom row indication lights for item B. Blue (RED) = sensor status (lit when connected).
C	<i>Enterprise Plus</i> power ON/OFF switch.
D	Selector switch for AC inputs A or B (item Y).
E-1	AC input select lights indicate which AC input is being used. Only one input light will be ON at any time.
E-2	AC "input available" lights indicate available AC input at the redundant AC input port(s).
F & H	Left and right selection switches toggle/rotate between indicators (lights in items A, B, and I) and their respective ports.
G	System display screen incorporates four seven-segment LEDs. Typical outputs include display of total system current and voltage, individual currents on all 8 AC ports, analog readings on analog ports, and ON/OFF readings of digital ports. Output will be in correct units when available.
I-1	Eight (8) AC output selector switches (with numeric labels) for AC outlets (item Z).
I-2	Eight (8) AC output top row indication lights. Green light = ON, NO Light = OFF, Red light = Error. If the outlet control switch is used to deactivate an outlet, the early warning is activated and the LED will flash yellow for the user-defined duration. Solid yellow indicates that an outlet is selected for function/operation.
I-3	Eight (8) AC output bottom row indication lights. Yellow = remote control is enabled; green = local control is enabled; blinking red = error; solid red = port is locked locally to disable remote control.
J	Auxiliary power input (utilized if the Power Distribution Unit (PDU) is not connected to provide power to the Monitoring and Control Unit (MCU)).



Enterprise Plus...

...total enterprise enablement - all information and control managed through one source!

Product Description

<u>Part</u>	<u>Item Description and Function</u>
K	PDU extension port that provides communications between the PDU (item ZZ) and the MCU.
L	Remote MCU connection that provides extended communications between the PDU (item YY) and the MCU.
M	Eight (8) digital output (RJ45) early warning ports– to communicate pending shutoff of AC outputs (item Z, item I).
N	Eight (8) digital sensor (RJ45) input ports.
O	Eight (8) analog/digital (RJ45) input ports.
P	Two (2) RS232 inputs for Uninterruptible Power Quality (UPQ) system control.
Q	Ethernet port that provides for Power Innovations IP remote management.
R	RS232 port (includes handshaking).
S	Auxiliary port.
T	Link out for expansion to other Enterprise Plus MCUs.
U	Link in for integration to other Enterprise Plus MCUs.
V	USB port for camera or other USB functions.
W	Cable tie-down bar for strain relief.
X	Circuit breakers (for item Y).
Y	Redundant 20 amp AC inputs A (primary) and B (secondary). Each input is independently protected.
Z	Eight (8) controlled AC outputs with individual monitoring.
AA	PDU extension port that provides communications between the MCU (item K) and the PDU.
AB	Remote PDU expansion ports link PDU to other PDUs.
AC	PDU 10/100 Ethernet Port used in stand alone PDU.

Enterprise Plus...

...total enterprise enablement - all information and control managed through one source!

Remote & Local Management & Control

Full Remote and Local Management and Control Options

The EnterprisePlus can be monitored, managed, and controlled locally or remotely via a network, an IP address, or a dial-up connection—a comprehensive, easy-to-understand, and secure Web page provides vital information from the EnterprisePlus.

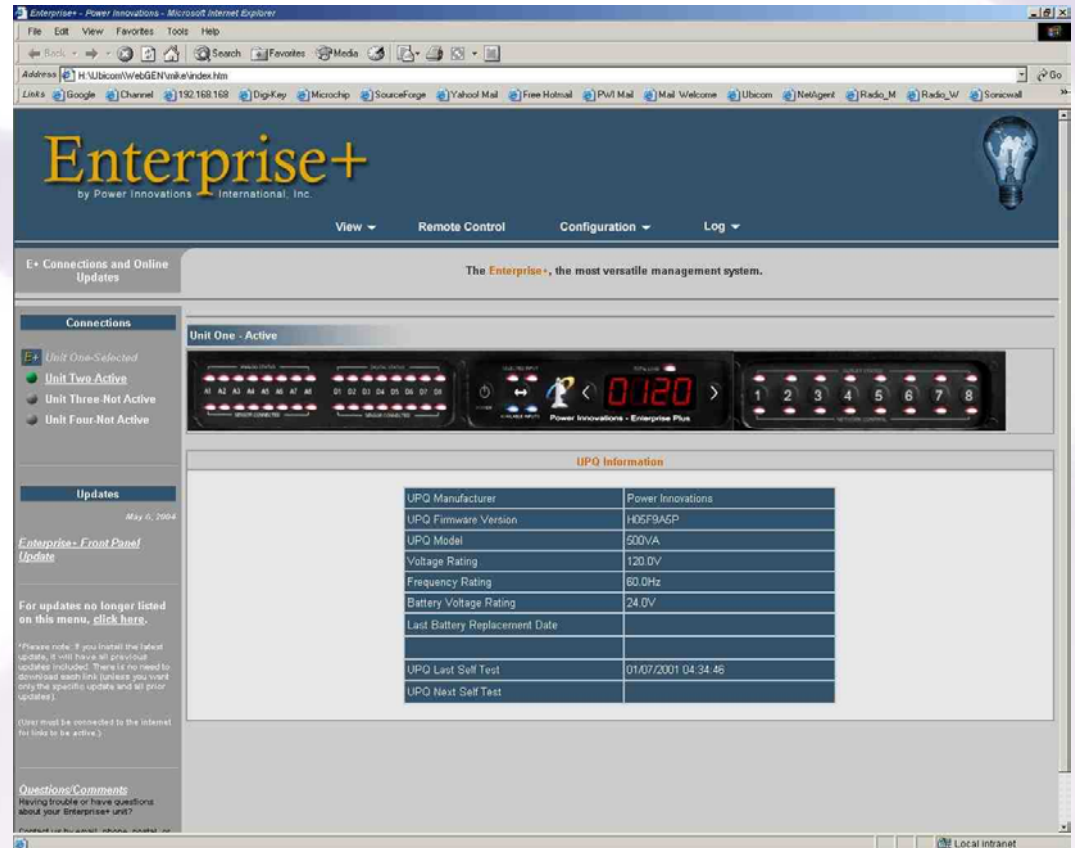
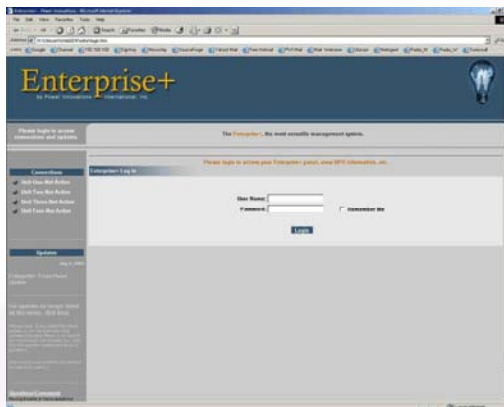
Programmable and configurable responses can be determined and set by the user to allow such functions as text messaging, pages, and conditional decision trees. The EnterprisePlus is customizable to any site and any network through its programmable IP, MASK, and gateway addresses. Security protocol is implemented in the EnterprisePlus to allow secure operation.

Each load is monitored by:

- Voltage
- Current
- Power

Through a wide range of expandable analog and digital sensors, the EnterprisePlus also allows the monitoring and control of various environmental conditions:

- Temperature
- Humidity
- Water Levels
- Fire
- Smoke
- Etc.





Enterprise Plus...

...total enterprise enablement - all information and control managed through one source!

Features and Benefits

- Enhanced facility security
- Comprehensive environmental administration
- Extensive power management
- System security
- Exclusive revolutionary design
 - Expandable and programmable
 - Flexible port configuration
 - Multi-mode communications
 - Unsurpassed IP-based Web-page communications and control
 - Multi-processor control (6)
 - Comprehensive display
 - Modular design
 - Flexible horizontal or vertical power distribution units (PDUs)